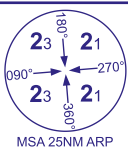
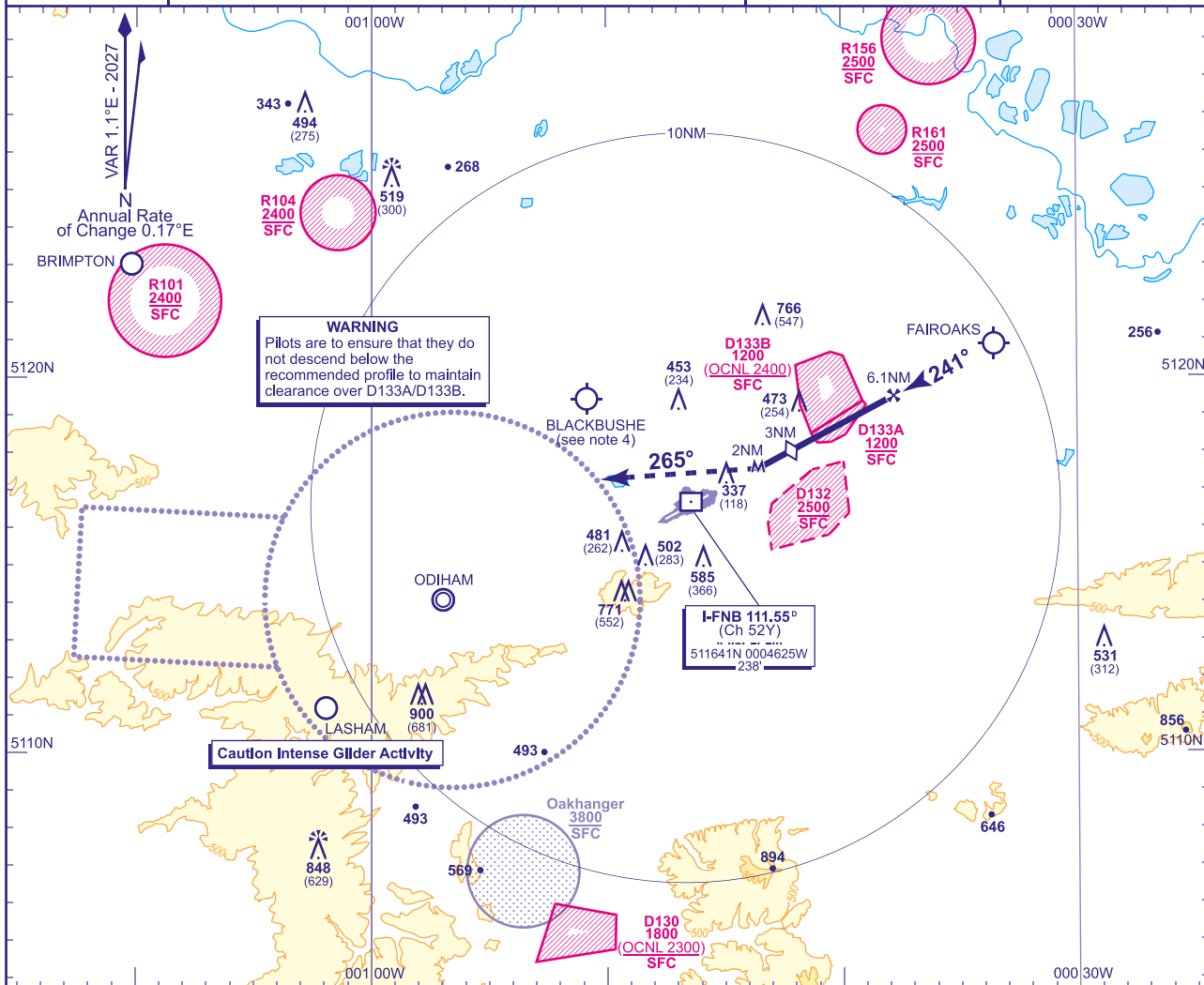


**FARNBOROUGH**  
**SRA RTR 2NM Z**  
**RWY 24**  
(ACFT CAT A,B,C,D)



APP 134.355, 125.250	FARNBOROUGH RADAR	AD ELEVATION <b>238</b>
TWR 122.780	FARNBOROUGH TOWER	THR ELEVATION <b>219</b>
RAD 130.055	FARNBOROUGH DIRECTOR	OBSTACLE ELEVATION
ATIS 128.405	FARNBOROUGH INFORMATION	<b>900 AMSL</b> (681) (ABOVE THR)
		BEARINGS ARE MAGNETIC

TRANSITION ALTITUDE  
6000

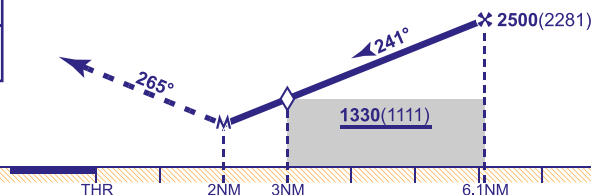


RADAR ADVISORY HEIGHTS Gradient 6.1%, 372FT/NM

NM	6.1	5.0	4.0	3.0 (SDF)
ALT(HGT)	2500(2281)	2080(1861)	1710(1491)	1330(1111)

## MAPt RTR 2NM

At the MAPt, turn right onto track 265°, climbing to **3000**, then as directed by ATC.



Aircraft Category		A	B	C	D	Rate of descent	G/S KT	160	140	120	100	80
OCA (OCH)	Procedure	970(751)	970(751)	970(751)	970(751)		FT/MIN	990	870	740	620	500
VM(C)OCA (OCH AAL)	South of RWY 06/24	970(732)	1020(782)	1170(932)	1170(932)							

**NOTE**

- 1 MSA are based on obstacle/terrain clearance. Pilots are to ensure safe navigation to remain clear of active Danger Areas.
- 2 SUA AIS available on Farnborough Radar 133.440 when open; other times London Information on 124.600.
- 3 CAT B,C and D no circling when EGD132 is active, CAT C and D no circling when EGD133A and EGD133B are active.
- 4 Pilots are reminded of the close proximity of Blackbushe aerodrome, 3.8NM north west of Farnborough and to remain clear due to intense GA activity.
- 5 See Loss of Communication Procedures in EGLF AD 2.22 Flight Procedures.
- 6 Radar Advisory Heights are to Touchdown.
- 7 No turns before MAPt.
- 8 Procedure not available when EGD132 or EGD133B (above **1200**) are active.

CHANGE (1/26): MAG INFO REVISED. MAG HEADINGS. RESTRICTED AREA EGR161 ADDED.